

# Scouts

44th Gloucester  
Venture Scout  
Unit



Activities  
Diary

# Activities Diary

Volume One

## 44th Gloucester Venture Scout Unit

This diary contains reports, pictures, thoughts and commentary on the activities undertaken by unit members.

It is intended to be the "official" record of such events kept up to date by the unit members themselves in addition to any supplementary photo-logs and Venture 44 Special Editions.

Volume 1 is a compilation of material surviving from the unit's first 25 years.

Volume 2 continues the story of an exciting Venture Scout Unit based at Gloucestershire's premier grammar school -  
Sir Thomas Rich's



44th GLOUCESTER

S. T. R. S

MITCHELL PATROL

LOG BOOK





The Scouters and Court of Honour  
of the 44th Fens (St. Kewick) Troop  
are running this

# Boy Scout Camp

according to

## "Camping Standards"

Place of Camp Bay of Biscay, Faken, New Hill, Penzance

Dates 20th - 21st April 1963

Signed [Signature]  
District Commissioner.

Remarks of Visiting Commissioner: Very happy and well set out camp.

Signed [Signature]

D.C. of \_\_\_\_\_ District.

### Signatures of all Campers :

FALCONS	EAGLES	LIONS	PANTHERS
1st <u>J. Baker</u>	1st <u>R. J. Menett</u>	1st <u>J. L. Lewis</u>	1st <u>R. Merrett</u>
2nd <u>Je. Blundell</u>	2nd <u>S. Butling</u>	2nd <u>B. H. Mascie-Taylor</u>	2nd <u>D. Brooks</u>
3rd <u>P. B. Morgan</u>	3rd <u>T. H. Wilton</u>	3rd <u>M. J. Robbins</u>	3rd <u>D. Crowhurst</u>
4th <u>C. J. R. Mascie-Taylor</u>	4th <u>A. S. Chalkley</u>	4th <u>R. Andrews</u>	4th <u>D. Bignell</u>
5th <u>P. Whitehouse</u>	5th <u>G. Jettif</u>		

### HEAD QUARTERS GROUP

- SCOUTMASTER John Y. Lopez
- ASSISTANT SCOUTMASTER Brian Z. Feldes
- QUARTERMASTER Michael D. Rogers
- MEDICAL OFFICER David J. Rogers

# SKYE 1967



THE LOGBOOK OF THE 44TH GLOUCESTER SENIOR  
SCOUT TROOP EXPEDITION TO THE ISLAND FROM  
26<sup>th</sup> JULY TO 6<sup>th</sup> AUGUST 1967.





From Elgol, a view into the Cuillin. Sgurr na Stri  
(1623 ft) marked with an arrow is on the left of the  
Camasunary valley, just visible on the far right.  
Boats leave this jetty for Loch Coruisk

Visible from the campsite (usually) was the Island of Rhum, and Eigg, one of its satellites. The wind was generally such that we could forecast immediate weather changes by seeing what was coming across from Rhum.







Loch Coruisk penetrates into the Black Cuillin and rocky mountain faces 3000ft high come down to the water side. One of Scotlands most famous lochs, it was visited on August 2<sup>nd</sup>

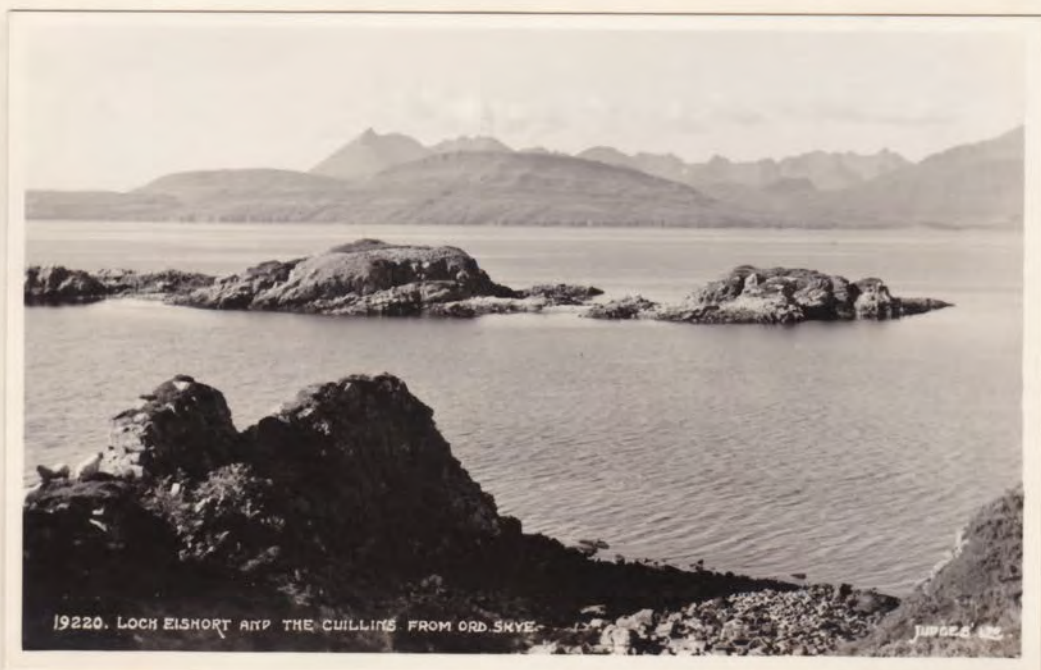
The M.V. Clansman which took the party to and from  
the Island (Mallaig to Armadale)





From Broadford the road runs through Torrin and along the head of Loch Slapin. The smooth sounds of the Red Hills overlook the loch.

From Torrion to Elgol the road runs along the Strathaird Peninsula (in the middle distance of picture) below Beinn Meabost (1128 ft). In the background the Black Cuillin can be seen, and the ridge of Blaven to the far right





Marsco (2414ft) is one of the highest of the Red Hills, and was ascended by the party on Tuesday August 1<sup>st</sup>. From the top it was possible to see much of the island, with a particularly good view of the Black Cuillin.

Blaven (3042 ft) is an outlier of the Cuillin, with a reputation as a killer mountain. It is also reputed to be sufficiently magnetic to affect a compass. Three members of the party made an ascent in mist on August 3<sup>rd</sup>, but the mountain failed to fulfil its reputation on either score.





The first campsite used was at Broadford, half way between Armadale and Elgol, close to the sea on the right of the picture. The village was the main shopping centre for the expedition.

To the west of Broadford, the Red Hills, dominated by Beinn na Caillich (2403 ft) overshadow the village.







One of the island's traffic hazards.



MAP OF AREA AROUND CAMASUNARY

SCALE 1 MILE TO 1 INCH





Loch Coruik  
In the heart of the Cullin Hills, NW of Skye.  
A Natural Colour Photograph

The Cullin and Loch Scavaig from Eigel, NW of Skye  
The whole range of this famous mountain group, with  
its transparent range of rugged peaks, is well seen from  
the shores of Loch Scavaig. The Broadford Airport  
road has been re-surfaced and access to the magnificent  
scenery of this part of Skye has no artificialities.





THE RUGGED COAST OF STAFFIN BAY, ISLE OF SKYE,  
SHOWING THE KILT ROCKS P735481



Some 'unknown' times,  
locations, people.....



## Maxi thrills on mini wheels



### ...with the 80 mph scouts

THE roar of the crowd. The smell of rubber burning. Tight corners that rush forward at incredible speed. These are just part of the thrill of go-kart racing.

And for three Gloucester Venture Scouts and their leader, Mr. Frank Henderson, karting is just part of the fun of a scout's way of life.

Tomorrow they will be doing battle in the Scout Association National Karting championship at Tilbury Stadium, Essex, where their 80-mile-an-hour karts will be among many from scout groups all over the country.

Karting days for the 44th Gloucester Venture Scouts, started some time ago, when they were looking for a new kind of interest and one that no-one else in the area had.

They decided on trying their hand at karting and have achieved reasonable success.

Driving on Sunday will be two ex-students of Sir Thomas Rich's School, 18-year-olds Andrew Chalkley of 17, Woods Orchard-rd., and Phil Cole of 72, Park-ave., and 17-year-old Chris Kelly, of 248, Cheltenham-rd., who is still a student at the school.

Mr. Henderson, of 17, Billbrook-rd., Hucclecote, a teacher at Sir Thomas Rich's will be driving in the open class of the championship.

The four pilots of these 100 cc machines will be leaving Gloucester today transporting the karts in Mr. Henderson's dormobile. They will camp for the night at the Stadium.

Chris and Andrew have been driving the karts, a Comet powered by a Spanish engine

and a Zip with an Italian engine, for about 18 months, but for Phil it will be the first time out — a real test for a novice at a championship meeting.

The karts are run entirely from subscriptions, with the enthusiasts looking after their machines themselves.

Mr. Henderson reckons that the team spend something in the region of £40 a year on racing with the cost of entries, new tyres, RAC licence subscriptions, and replacements for the fiery motors.

Mr. Frank Henderson, the Venture Scout leader, at the controls of one of the machines as Phil Cole (left), Chris Kelly and Andrew Chalkley give a push to send him on a high speed circuit of the school's tennis courts.

# I SLAND VENTURE

22<sup>nd</sup> July → 7<sup>th</sup> August 1976

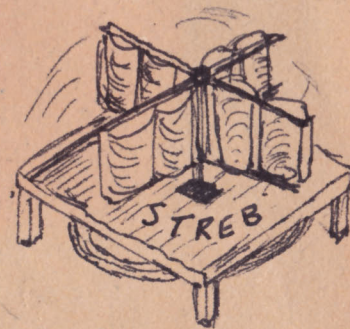
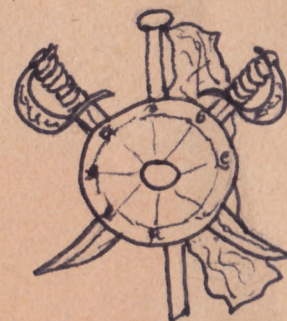


Gometra

A  
Gloucestershire County  
Scouts Event.



Bonnie Prince Charlie and the rebel band





Highlanders capture red-coats!!

44<sup>th</sup> Gloucester party included -

Frank Henderson + Bill Spear (Leaders)

'Workers' -	Pete Bright	Ben Emerson
	Ian Fletcher	Mark Evans
	Phil Champion	Keith Franklin
	Dick Chappell	Ian Howells
	Stuart Douglas	Bren Noonan
	Paul Dyer	Chris Pashley
		Rob Pragnell.

As part of this event on Mull, the 44<sup>th</sup> took over the island of Gometra (off of Ulva by Mull) and played hosts to groups of Scouts. Renegade bands loyal to Prince Charlie were battled out with wooden claymores, shields, pikes and all the trimmings of Scottish Highland clansmen in an authentic re-enactment of the flight (and fight) of Bonnie Prince Charlie (alias Bill Spear)

FOR FULL DETAILS & ACCOUNTS  
SEE VENTURE 44 ISSUE 22





Highlanders

.v.



Redcoats



The big battle  
Scene



Casualty!



Links with the  
mainland.



*Bringing in Supplies*



Camp ~ Home for a week!



FRESH (!) WATER SUPPLY



STREB ~

Early wind electricity  
generator for  
lighting.



KITCHEN ~ DRIFTWOOD  
BREAKFAST BAR