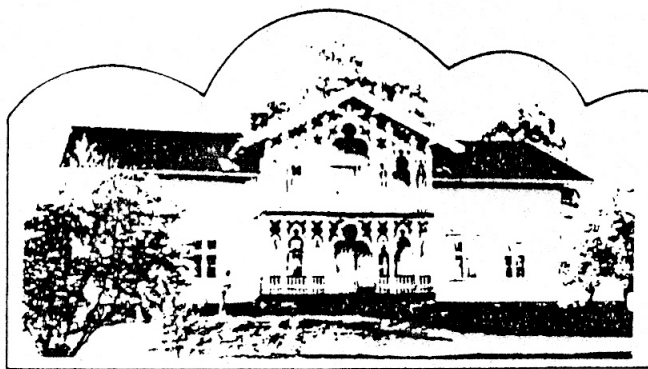


Nansen International Children's Centre Norway

NICC
Krattebøl
2120 Sagstua
NORWAY
Tel Nord Odal 43



Bankgironumber
5033 05 04983
Bergensbank
Bygdøy alle 21
Oslo 2 Norway

PADDLE '81

Information Sheet No.2

January 1981

Provisional Time Table for the Kayak Expedition, Paddle '81
Helsinki - Stockholm - Oslo, July-August 1981.

Expedition members and support party will meet in Helsinki:
July 9.

Press Conference - Reception: July 10.

The Paddle '81 expedition will be divided into 3 "water sections". This arrangement will allow expedition members to select the "water sections" to coincide with the amount of available time they can give to the project.

Water Section 1

Baltic Sea crossing: Helsinki-
Stockholm

Approximate dates

July 11 - July 25

Water Section 2

Göta Canal: Swedish inland waterway
Stockholm - Göteborg

July 26 - August 9

Water Section 3

Coastal waters of the Kattegat
to Oslofjord. Göteborg - Oslo

August 10 - August 23.

It is anticipated that there will be a nucleus of expedition members who will complete the kayak journey from Helsinki to Oslo. The type of craft to be used will vary in design according to the personal preference of the expedition members, but in any case they will all be "sea kayaks".

NICC, Krattebøl, 2 January 1981

Ernest Davies

Ernest Davies
Director

PADDLE '81

SPONSORSHIPS

International and national business houses are invited to financially or materially support PADDLE '81, an expedition of goodwill in projecting an awareness of the International Year of Disabled Persons.

Advertising space is available to business houses on 8 kayaks and paddles (see enclosed diagram) at a cost of N.kr.20.000. - 25.000. per kayak and two paddles.

There will be, besides the "spectator" public, mass media coverage of the expedition over a period of 2 months July - August 1981.

A Public Relation and Fund Raising team operating from a trailer will journey ahead of the team to create an information centre. From this "PR Centre" it is anticipated that sponsors could make available to the general public advertising material of their products and handouts.

The Principal towns in Finland, Sweden and Norway through which the kayak expedition will travel:

FINLAND

Helsinki
Ekenäs
Hangö
Storlandet
Mariehamn. Åland

SWEDEN

Stockholm-Göta Kanal
Södertälje
Oxelösund
Söderköping
Linköping
Motala
Karlsborg
Mariestad
Lidköping
Vanersborg
Trollhättan
Göteborg
Tjörn
Lysekil
Strömstad

NORWAY

Halden
Fredrikstad
Moss
Drøbak
Bygdøy -
Oslo