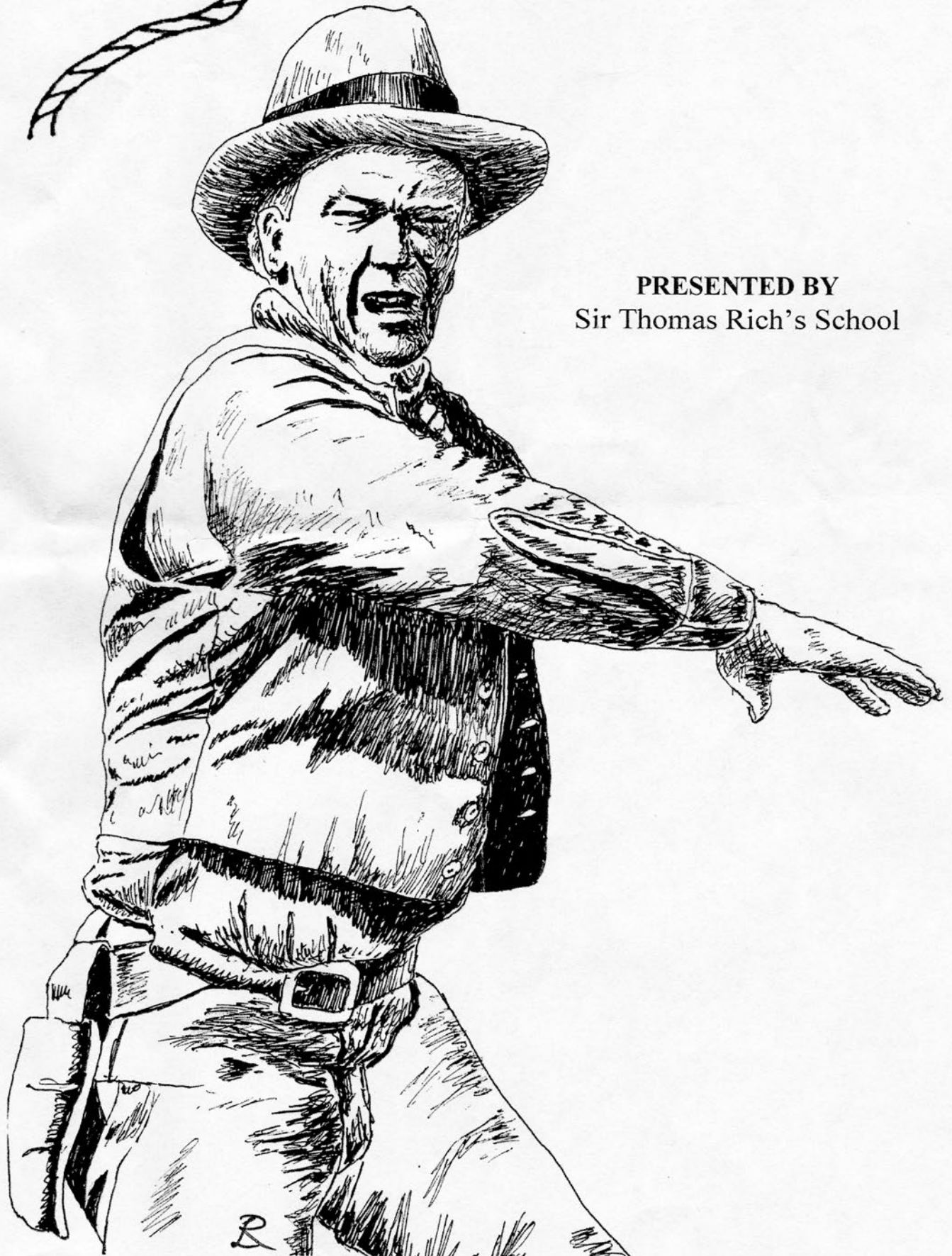
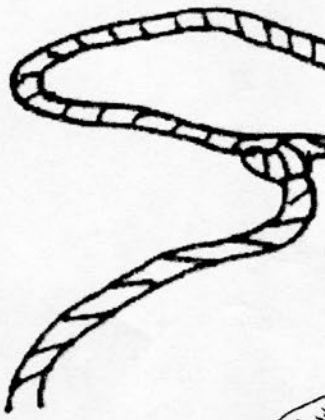


Rodgers and Hammerstein's

# KLAHOMA!



PRESENTED BY  
Sir Thomas Rich's School

## SYNOPSIS OF SCENES

Time: Early 1900's

Place: Indian Territory, Now Oklahoma

### ACT ONE

Scene 1: The Front of Laurey's Farmhouse  
Scene 2: The Smoke House  
Scene 3: A Grove on Laurey's Farm

### ACT TWO

Scene 1: The Skidmore Ranch  
Scene 2: Skidmore's Kitchen Porch  
Scene 3: The Back of Laurey's Farmhouse



## MUSICAL NUMBERS

### ACT ONE

"Oh, What A Beautiful Mornin'" - (Curly)  
"The Surry With The Fringe On Top" - (Curly, Laurey, Aunt Eller)  
"Kansas City" - (Will Parker, Aunt Eller and Chorus)  
"I Cain't Say No!" - (Ado Annie)  
"Many A New Day" - (Laurey, Chorus)  
"It's A Scandal! It's An Outrage!" - (Ali Hakim, Chorus)  
"People Will Say We're In Love" - (Curly, Laurey)  
"Pore Jud Is Daid" - (Curly, Jud)  
"Lonely Room" - (Jud)  
Dream Sequence: "Out of My Dreams" - (Chorus) "Dream Ballet"

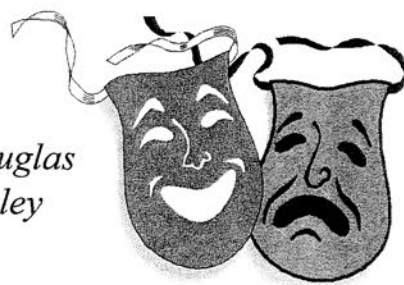
### ACT TWO

"The Farmer And The Cowman" - (Principals, Chorus)  
"All Er Nothin'" - (Will Parker, Ado Annie)  
"People Will Say We're In Love" - (Curly, Laurey)  
"Oklahoma" - (Principals, Chorus)

FINALE

## Cast

Aunt Eller	<i>Claudine Douglas</i>
Curly	<i>Alastair Stanley</i>
Laurey	<i>Lisa Bland</i>
Will Parker	<i>Ian Black</i>
Ado Annie Carnes	<i>Rachael Brown</i>
Ali Hakim	<i>Peter Hards</i>
Ike Skidmore	<i>Adam Stokes</i>
Andrew Carnes	<i>Craig Stevens</i>
Jud Fry	<i>Andrew Adams</i>
Cord Elam	<i>Sam Taunton</i>
Gertie Cummings	<i>Rhona Ingram</i>
Slim	<i>Jon Ellison</i>
Kate	<i>Clarri Simpson</i>
Ellen	<i>Luiza Patorski</i>
Vivian	<i>Alex Phillips</i>
Fred	<i>Peter Kellie</i>
Joe	<i>James Farley</i>
Tom	<i>Sam Davies</i>
Mike	<i>Andrew Low</i>
Zeke	<i>Richard Grant</i>



## Orchestra

### **Violin Leader**

*Rob Jones*

### **Violins**

*Malcolm Peckham*  
*Christine Riley*  
*Christopher Stanley*  
*Joseph Taunton*

### **Viola**

*Alison Vlach*

### **'Cello**

*Matthew Barnes*

### **Flute**

*Lewis Ferneyhough*  
*Richard Duxbury*

### **Clarinet**

*Jonathan Taylor*  
*Wesley Duggan*

### **Bassoon**

*Richard Umbers*

### **Trumpets**

*Nick Walkley*  
*Andrew Smith*

### **Horn**

*Ben George*  
*Jess Forster*

### **Trombone**

*David Slinger*

### **Tuba**

*Ian Hill*

### **Bass Guitar**

*Alasdair Burchill*

### **Percussion**

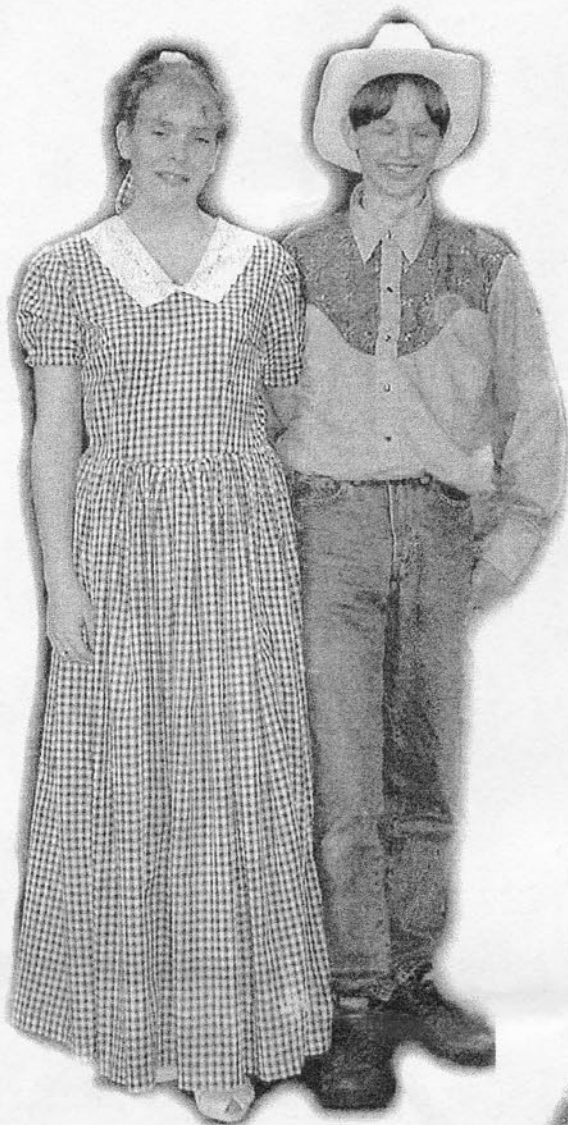
*Phil Brown*

**Musical Direction by James Thompson**  
**Produced and Directed by Elizabeth Stanley**



**PRINCIPALS**

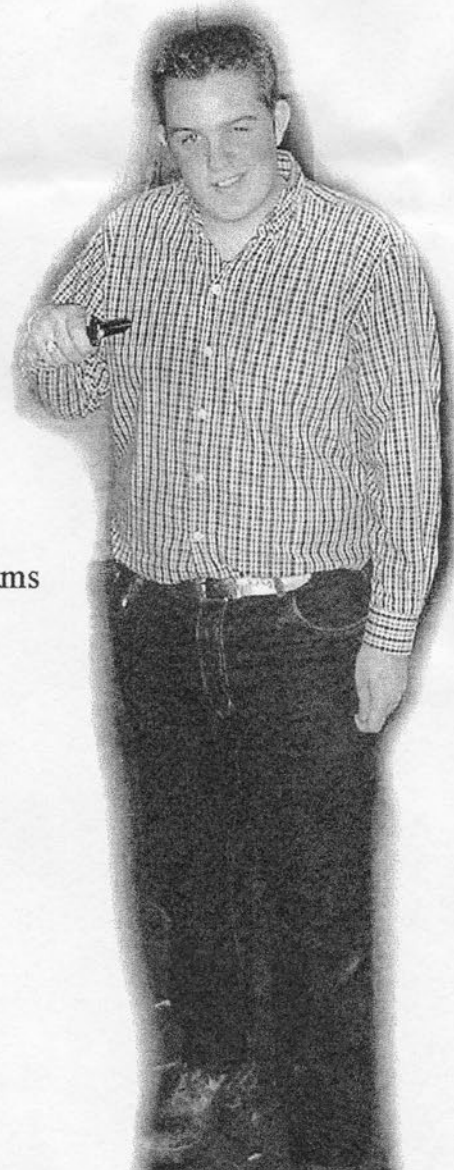
Laurey  
Lisa Bland



Curly  
Alastair Stanley



Jud Fry  
Andrew Adams



Aunt Eller  
Claudine Douglas



PRINCIPALS

Andrew Carnes  
Craig Stevens



Ado Annie Carnes  
Rachael Brown

Will Parker  
Ian Black

Ali Hakim  
Peter Hards



## Male And Female Choruses

Adam Hunston  
Adam Stokes  
Amit Thakor  
Andrew Low  
Dan Gladwell  
Dexter Bradley  
James Farley  
Matthew Key  
Michael Curtis  
Nick Davies  
Peter Kellie  
Rob Litchfield  
Richard Grant  
Rich Morgan  
Sam Davies  
Scott Yeasley



Alex Phillips  
Clarri Simpson  
Emma Fitzgerald  
Joanna Woolcock  
Leah Crocombe  
Luiza Patorski  
Morgana Lovell  
Rachael Hanney  
Rhona Ingram  
Sarah Thirlow

## **CREDITS**

### **Makeup**

*J. Spilsbury, M. Adamson, A. Low, S. Edwards, C. Mooney,  
J. Thompson, C. Jonah, L. Sibieta, A. Briscoe, A. Phillips,  
B. Mayes, A. Cheung, A. Godden*

### **Tickets and Programmes**

*Rachael Brown*

### **Choreography**

*Jane Spilsbury, Ian Black, Elizabeth Stanley*

### **Set Design**

*Roger Lockey, Robin Boyden, Chris Jonah, Adam Stokes*

### **Costumes**

*Mrs Bland, Mrs Brown, Mrs Crocombe*

### **Stage Crew**

*Tom Towers, Stefan Edwards, Ashley Burgum, Adam Langley, Luke Sibieta*

### **Lighting and Sound**

*Alan Passey, Tim Wardle, Toby Stewart*

### **Front of House**

*Ian Bowie, Steve Pack, David Dempsey*

### **Ticket Sales**

*Barbara MacDonald*

---

Refreshments by The Parents' Association

---

